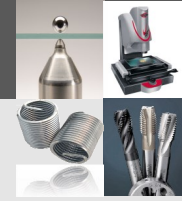


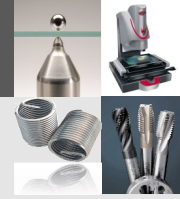
## Advanced Digital Rockwell/Superficial Rockwell Hardness Tester

**Model No. : KHR-300 (Rockwell);KHR-310 (Superficial);KHR-320 (Twin Rockwell)**

- Horizontal Protrudent Indenter Design, suitable also for internal and external testing.
- Testing on Surfaces difficult to reach. Testing internal surface of rings and tubes with diameters over 23mm.
- Modern design with Titanium metallic Silver finish
- Provided with many features such as high measuring precision, wide measuring range
- The tester is suitable for testing of carbon steel, alloy steel, cast iron, non ferrous metal.
- Automatic load cycle. The loading, dwell, unloading process of the main test force are controlled exactly to meet standard.
- Measuring results digitally displaying and can be printed, or transmitted to external computer automatically by USB or RS-232 data output port.
- Test value can be transformed to the value of HB, HV, HK and  $\sigma_b$  value.
- The tester meeting all the following standard such as ISO 6508-2, ASTM E18.



	KHR-300	KHR-310	KHR-320
<b>Preload</b>	98.1N (10kgf)	29.4N (3kgf)	29.4N (3 kgf) 98.1N (10 kgf)
<b>Total test force</b>	588.4N (60kgf), 980.7N (100kgf), 1471N (150kgf)	147.1N(15kgf), 294.3N (30kgf), 441.3N(45kgf)	147.1N(15kgf), 294.3N (30kgf), 441.3N(45kgf), 588.4N (60kgf), 980.7N (100kgf), 1471N (150kgf)
<b>Scales</b>	HRA, HRB, HRC, HRD, HRE, HRF, HRG, HRH, HRK, HRL, HRM, HRP, HRR, HRS, HRV	HR15N, HR30N, HR45N, HR15T, HR30T, HR45T, HR15W, HR30W, HR45W, HR15X, HR30X, HR45X, HR15Y, HR30Y, HR45Y	HR15N, HR30N, HR45N, HR15T, HR30T, HR45T, HR15W, HR30W, HR45W, HR15X, HR30X, HR45X, HR15Y, HR30Y, HR45Y HRA, HRB, HRC, HRD, HRE, HRF, HRG, HRH, HRK, HRL, HRM, HRP, HRR, HRS, HRV
<b>Load dwell duration</b>	2~50s, can be set and stored		
<b>Resolution</b>	0.1HR		



<b>Display</b>	High definition backlight LCD		
<b>Operation</b>	Menu selectable, Membrane keypad		
<b>Upper/lower limits setting &amp; alarming</b>	✓	✓	✓
<b>Data statistics</b>	Avg., Max., Min., S, R available		
<b>Curved surface correcting automatically</b>	✓	✓	✓
<b>Memory</b>	Max 500 items of test results stored automatically		
<b>Data output</b>	RS-232 to micro printer, USB port to external PC		
<b>Testing space</b>	240mm in vertical, 155mm in horizontal		
<b>Dimensions</b>	720mm×220mm×800mm		
<b>Power supply</b>	AC, 220V/110V, 50~60Hz, 4A		
<b>Net weight</b>	<b>120kg</b>	<b>110kg</b>	<b>130kg</b>



## Standard Configuration

	KHR-300	KHR-310	KHR-320
<b>Host Machine</b>	✓	✓	✓
<b>Standard hardness block for A scale</b>	✓		✓
<b>Standard hardness block for B scale</b>	✓		✓
<b>Standard hardness block for C scale</b>	✓		✓
<b>Standard hardness block for 30N scale</b>		✓	✓
<b>Standard hardness block for 30T scale</b>		✓	✓
<b>Ball indenter (1/16")</b>	✓	✓	✓
<b>120° cone diamond indenter</b>	✓	✓	✓
<b>Mounting screws for indenter ×2</b>	✓	✓	✓
<b>Round plane anvil</b>	✓	✓	✓
<b>"V" Shape anvil</b>	✓	✓	✓
<b>Power supply wire</b>	✓	✓	✓
<b>Screwdriver for indenter mounting</b>	✓	✓	✓
<b>Dust cover</b>	✓	✓	✓

## Optional accessories:

<b>Short diamond indenter</b>
<b>Chisel diamond indenter</b>
<b>Slender diamond indenter</b>
<b>1/8"ball indenter and spare steel ball</b>
<b>1/4"ball indenter and spare steel ball</b>
<b>1/2"ball indenter and spare steel ball</b>
<b>φ225 anvil</b>
<b>φ150 anvil</b>
<b>Standard hardness block for other scales</b>
<b>Micro printer</b>